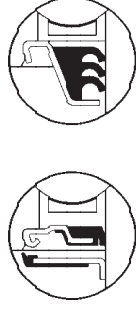
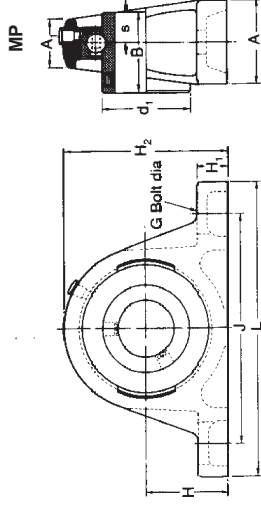


MP SERIES



Bearing inserts with flinger seals shown on pages 91 and 92 can be fitted into these housings. The unit reference has the suffix 'FS' e.g. MP40FS.

Triple seal bearing inserts shown on pages 88 to 90 can be fitted into these housings. The unit reference has a prefix 'T', e.g. TMP40.



Shaft diameter	RHP designation	Basic bearing insert	Dimensions							bolt centres				A	
			L	H	H1	H2	J	Jmax	Jmin	G					
25	MP25	1030	160.5	44.45	19.3	84.3	127.5	108.5	12	41.5					
1	MP1		6.319	1.750	.760	3.319	5.020	4.272	1/2	1.634					
30	MP30	1035	166.0	47.60	17.5	93.0	136.5	121.5	12	44.5					
1 3/16	MP43/16		6.535	1.874	.689	3.661	5.374	4.783	1/2	1.752					
1/4	MP1/4														
35	MP35	1040	203.2	53.98	23.0	107.5	160.0	135.0	12	57.0					
1 3/8	MP49/8		8.000	2.125	.906	4.232	6.300	5.315	1/2	2.244					
1 7/16	MP17/16														
40	MP40	1045	222.2	58.72	22.5	116.7	172.5	145.0	16	60.0					
1 1/2	MP11/2		8.748	2.312	.886	4.594	6.791	5.709	5/8	2.362					
45	MP45	1050	222.2	58.72	22.5	116.7	172.5	145.0	16	60.0					
1 11/16	MP11/16		8.748	2.312	.886	4.594	6.791	5.709	5/8	2.362					
1 3/4	MP13/4														
50	MP50	1055	219.5	63.50	24.8	129.5	178.5	162.5	16	60.0					
1 7/8	MP47/8		8.641	2.500	.976	5.098	7.028	6.398	5/8	2.362					
1 15/16	MP15/16														
2	MP2														
55	MP55	1060	249.5	69.85	26.2	142.2	201.0	179.0	20	69.5					
2 3/16	MP23/16		9.823	2.750	1.031	5.598	7.913	7.047	3/4	2.736					
2 1/4	MP21/4														
60	MP60	1070	286.0	76.20	27.0	153.0	224.5	189.5	20	72.0					
2 3/8	MP65R		10.472	3.000	1.063	6.024	8.839	7.461	3/4	2.835					
65	MP65R														
2 1/2	MP21/2														
65	MP65	1075	330.2	88.90	28.6	177.8	255.6	206.0	24	88.9					
2 1/2	MP21/2		13.000	3.500	1.126	7.000	10.063	8.110	1	3.500					
70	MP70														
2 11/16	MP211/16														
2 3/4	MP23/4														
75	MP75	1080	330.2	88.90	31.8	184.2	255.6	228.0	24	88.9					
2 15/16	MP215/16		13.000	3.500	1.252	7.252	10.063	8.976	1	3.500					
3	MP3														
80	MP80	1085	381.0	101.60	31.8	203.2	317.5	260.0	24	101.6					
3 1/16	MP31/16		15.000	4.000	1.252	8.000	12.500	10.236	1	4.000					
3 1/4	MP31/4														
85	MP85	1090	381.0	101.60	33.3	209.6	319.1	246.1	24	111.1					
3 1/8	MP37/8		15.000	4.000	1.311	8.252	12.563	9.689	1	4.374					
90	MP90														
3 1/2	MP31/2														
95	MP95	3095	431.8	127.00	33.3	254.0	371.5	301.6	24	120.6					
100	MP100		17.000	5.000	1.311	10.000	14.626	11.874	1	4.748					
3 15/16	MP315/16														
4	MP4														

Please check availability

A1	B	s	d1	ISO load ratings		Rec. max. speed	Mass (approx.)
				dynamic C <sub>r</sub>	static C <sub>0r</sub>		
mm				newtons	newtons	rev/min	kg
inches				lbf	lbf		lb
27.5	38.10	15.93	40.00	19500	11300	5300	1.3
1.083	1.500	.627	1.575	4380	2540	2.9	2.9
30.5	42.88	17.53	46.69	25700	15300	4500	1.7
1.201	1.688	.690	1.838	5780	3440	3.8	3.8
40.5	49.23	19.10	52.70	29100	17900	4000	2.7
1.594	1.938	.752	2.075	6540	4020	6.0	6.0
39.5	49.23	19.10	57.30	32500	20500	3700	3.2
1.555	1.938	.752	2.256	7310	4610	7.1	7.1
39.5	51.59	19.10	62.20	35000	23200	3400	3.2
1.555	2.031	.752	2.449	7870	5220	7.1	7.1
39.5	55.65	22.28	68.81	43500	29200	3100	4.0
1.555	2.187	.877	2.709	9780	6560	8.8	8.8
46.0	65.07	25.45	75.34	52500	35900	2800	7.1
1.811	2.562	1.002	2.966	11800	8070	15.6	15.6
47.0	74.63	30.23	87.00	62000	44000	2450	9.3
1.850	2.938	1.190	3.425	13940	9890	20.5	20.5
66.7	77.7	33.37	92.0	66000	49300	2300	13.4
2.626	3.062	1.314	3.622	14840	11080	29.5	29.5
66.7	82.55	33.37	98.50	72500	53000	2150	14.3
2.626	3.250	1.314	3.878	16300	11910	31.6	31.6
68.3	85.72	34.18	106.02	83500	63800	2000	18.2
2.689	3.375	1.346	4.174	18770	14340	40.2	40.2
79.4	96.04	39.73	111.66	96000	71500	1900	23.4
3.126	3.781	1.564	4.396	21580	16070	51.6	51.6
98.4	117.48	49.27	130.43	143000	110000	1600	34.4
3.874	4.625	1.940	5.135	32150	24730	75.8	75.8